

In this new millennium, BARCO's ELM Series proved to be very successful at the Washington Millennium celebrations, the Grand Opening of the Hyatt Regency Lake Las Vegas Resorts, London's Millennium Dome and the 72nd Annual Academy Awards[®], ... to name only a few.

Light Output

	ELM G10	ELM R12
Center lumen	11,500	14,000
ANSI lumen	10,000	12,000

Brightness Uniformity:

> 90% for the total screen area

Digital MicroMirror Device

3 high resolution DMD's:
Resolution (pixels)

	ELM G10	1024 x 768	(XGA)
ELM R12	1280 x 1024	(S-XGA)	

Lamp

Typical lifetime: 1000 hours

Contrast Ratio

	ELM G10	ELM R12
on 5x4 B/W checkerboard	>250 :1	>250 :1
full white/full black	>450 :1	>500:1

Compatibility

- All current Video sources in Composite, S-VHS, RGB or Component or Serial Digital format
- All currently proposed HDTV,, extended and improved television standards (1080i, 720p,...)
- Computers and workstations with a resolution of up to 1600 x 1280 pixels for ELM R12, and 1280 x 1024 for ELM G10
- Most Macintosh computers
- Two digital input slots to allow for direct digital interfacing with current and future digital standards

Lenses

Using adaptor rings the ELM is compatible with all existing XGA DLP lenses. BARCO's QLD Series lenses are recommended and offer extended shift possibilities when used with the ELM R12.

LD Lens Type Throw Ratio

	ELM G10	ELM R12
LD (0.8:1)	0.8	0.64
LD (1.5-2.5:1)	1.5-2.5	1.2-2.0
LD (2.5-4.0:1)	2.5-4.0	2.0-3.2
LD (4.0-7.0:1)	4.0-7.0	3.2-5.6

QLD Lens Type Throw Ratio

	ELM G10	ELM R12
QLD (1.2:1)	1.5	1.2
QLD (1.5-2.0:1)	1.9-2.5	1.5-2.0
QLD (2.0-2.5:1)	2.5-3.1	2.0-2.5
QLD (2.5-4.0:1)	3.1-5.0	2.5-4.0
QLD (4.0-7.0:1)	5.0-8.7	4.0-7.0
QLD (5.6-12:1)	7.0-15.0	5.6-12.0

Remote Control

All controls are accessible through a user-friendly backlit infrared remote control:

- Source switching
- User settings per source
- Installation and service adjustments

Fixed Inputs

- RGB analog input with standard sync (BNC connectors), sync on green or separate sync
- Multifunctional 5-Cable input for the connection of
 - RGB analog signals with standard sync (BNC connectors) or tri-level sync, sync on green or separate sync
 - Standard Video signals
 - S-VHS signals
- RS232 or RS422 loop-through input (D9-connector) for PC based projector control
- SDI input (Serial Digital Input)
- Communication input (D9-connector) for peripherals
- 3 pin male XLR connector for wired remote (standard remote)
- 3 pin female XLR connector for bi-directional communication (ruggedized remote)

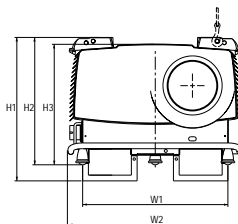
Optional Inputs

Two additional input slots are provided for five optional types of input modules:

- Video / S-Video Input: Video on BNC, S-Video on 4-pin mini-DIN connector
- Component Video Input (Y, R-Y, B-Y, S) on 4 BNC connectors
- RGB analog input with standard sync (BNC connectors), sync on green or separate sync
- RGB analog input with tri-level sync (BNC connectors), sync on green or separate sync
- 5-Cable input

Special Features

- 13-Bit signal processing for superior low-light performance.
- BARCO's patented Pixel Map Processor guarantees compatibility with the widest range of sources.



- Light shutter blanks image when paused
- BARCO's advanced TCR^{plus} feature improves the image quality of both video and RGB sources.

Power Consumption

Max. 3,750 Watt

AC Power

230 V +-10% .

Weight

Net weight 298lbs. / 135kg

Order Information

ELM G10	R9001500
ELM R12	R9001490

Lenses:

LD (0.8:1)	R9840420
LD (1.5-2.5:1)	R9840090
LD (2.5-4.0:1)	R9840270
LD (4.0-7.0:1)	R9840280
QLD (1.2:1)	R9840120
QLD (1.5-2.0:1)	R9840130
QLD (2.0-2.5:1)	R9840140
QLD (2.5-4.0:1)	R9840150
QLD (4.0-7.0:1)	R9840160
QLD (5.6-12:1)	R9840430

XGA Adaptor Ring	R9840370
XGA Zoom Ring (2.5-4:1 and 4-7:1)	R9840310
XGA Zoom Ring (1.5-2.5:1)	R9840320

CLO Kit	R9840640
Rigging Kit	R9840220
Forklift Slots	R9840200
Additional Lamp	R9840190
Lamp Refurb	R9840220

Dimensions	inch	mm
L1	55.9	1,420
L2	37.4	950
L3	51.7	1,314
L4	57.7	1,465
W1	24.9	632
W2	29.9	760
H1	24.6	624
H2	21.8	554
H3	20.6	524

